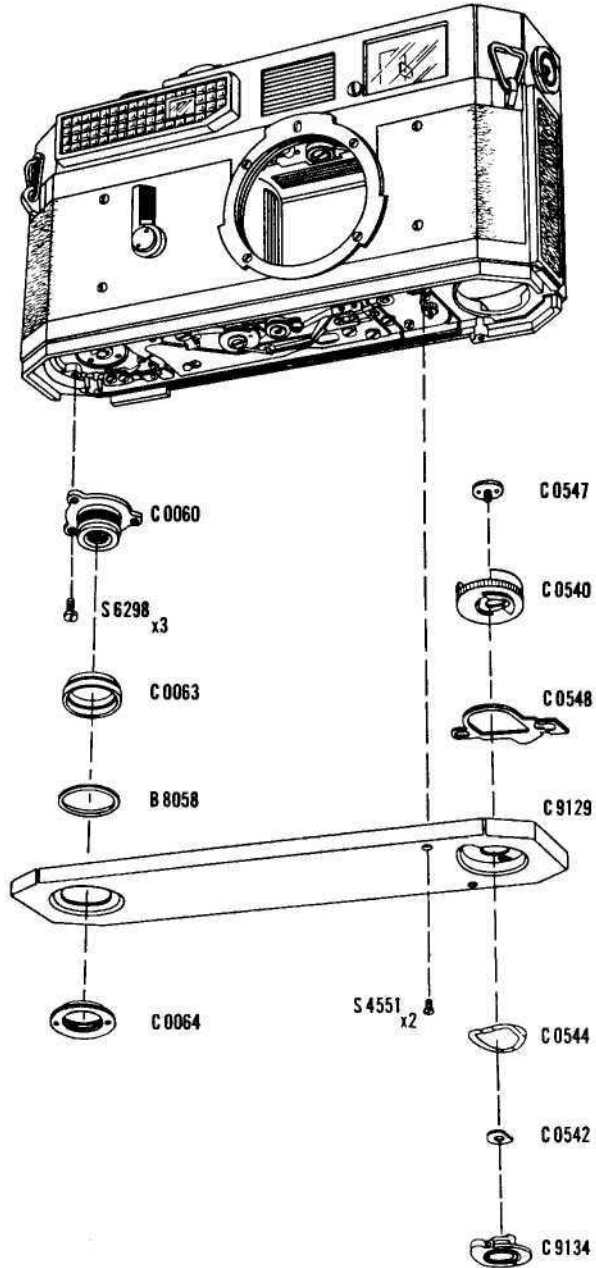
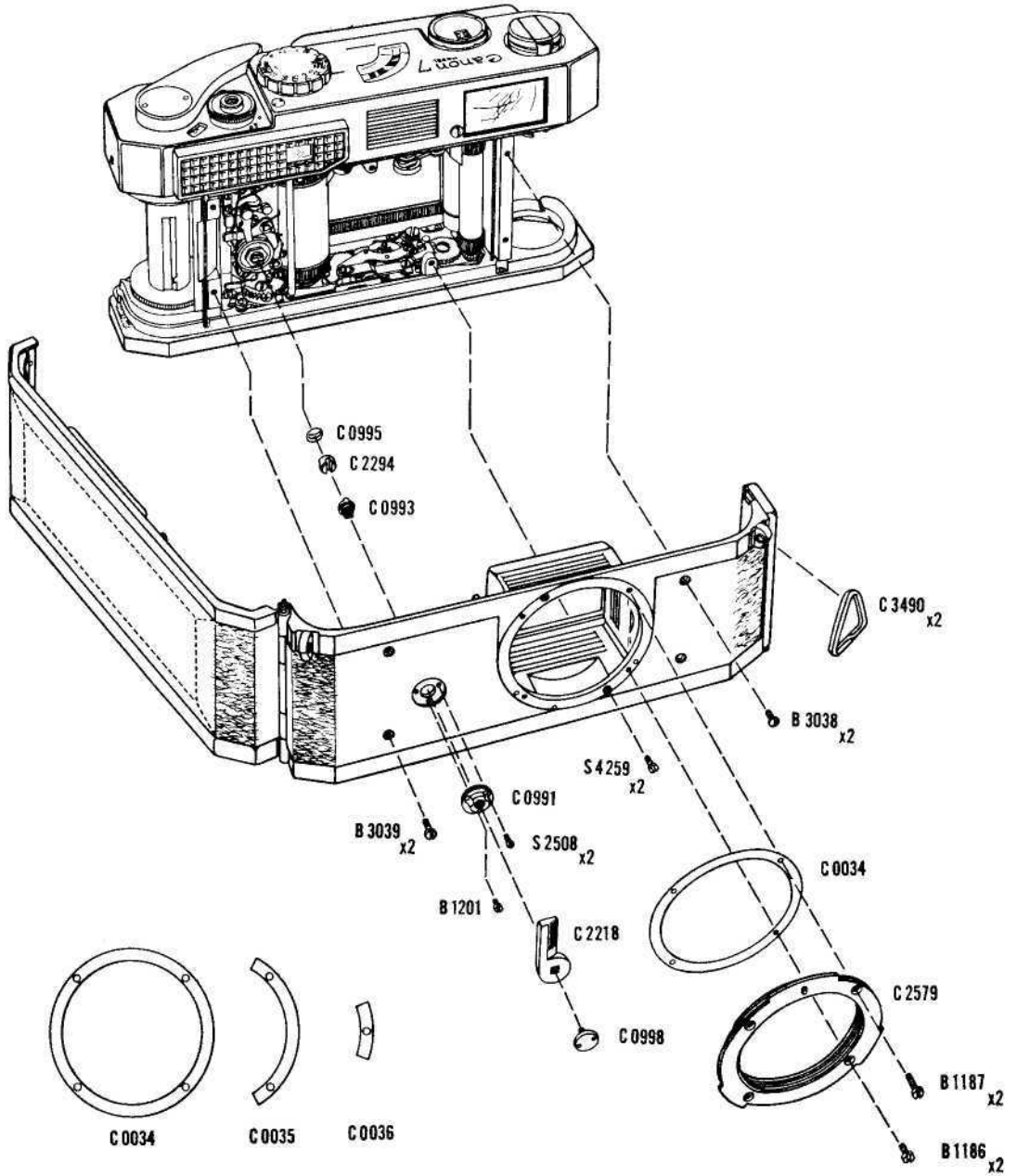


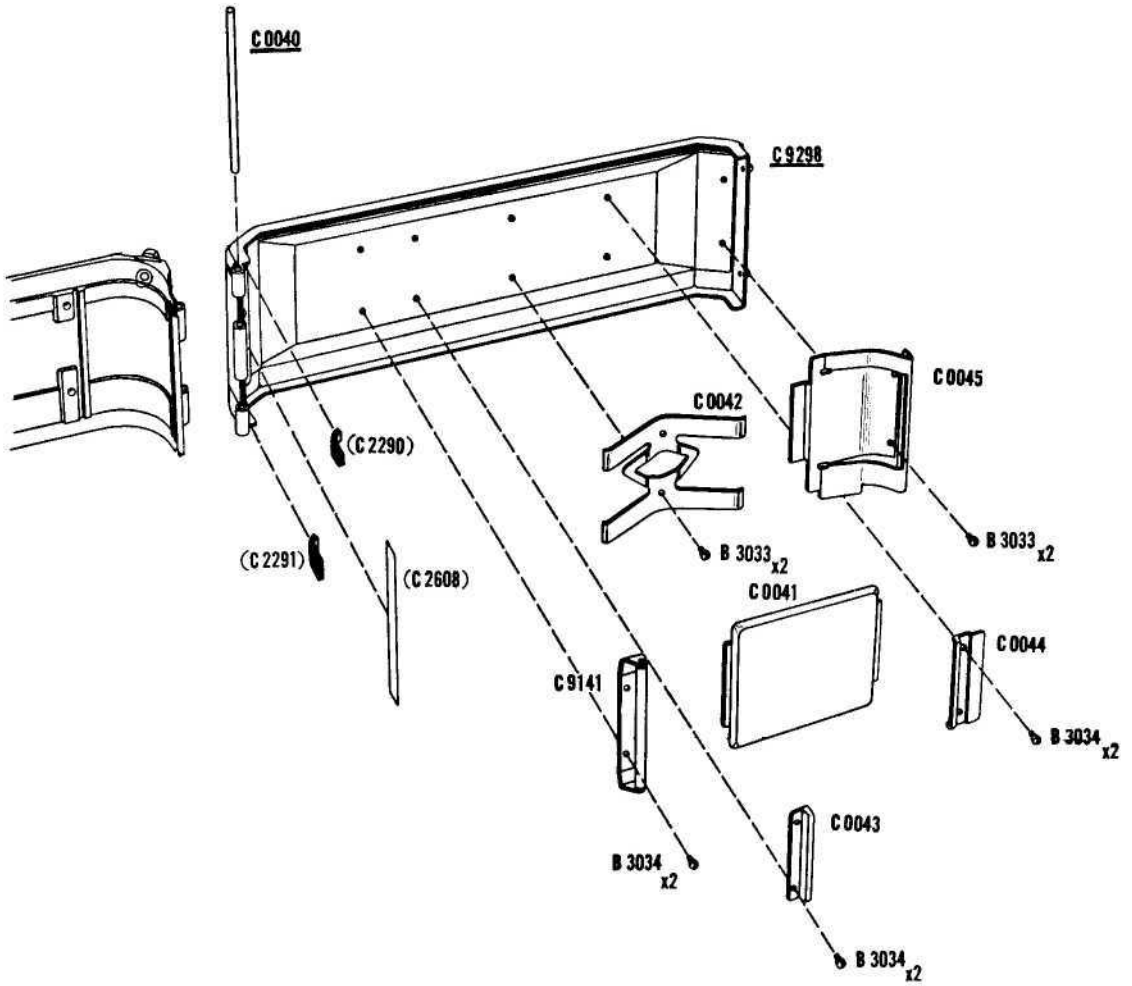
EXPLODED VIEW  
of  
CANON CAMERA MODEL 7



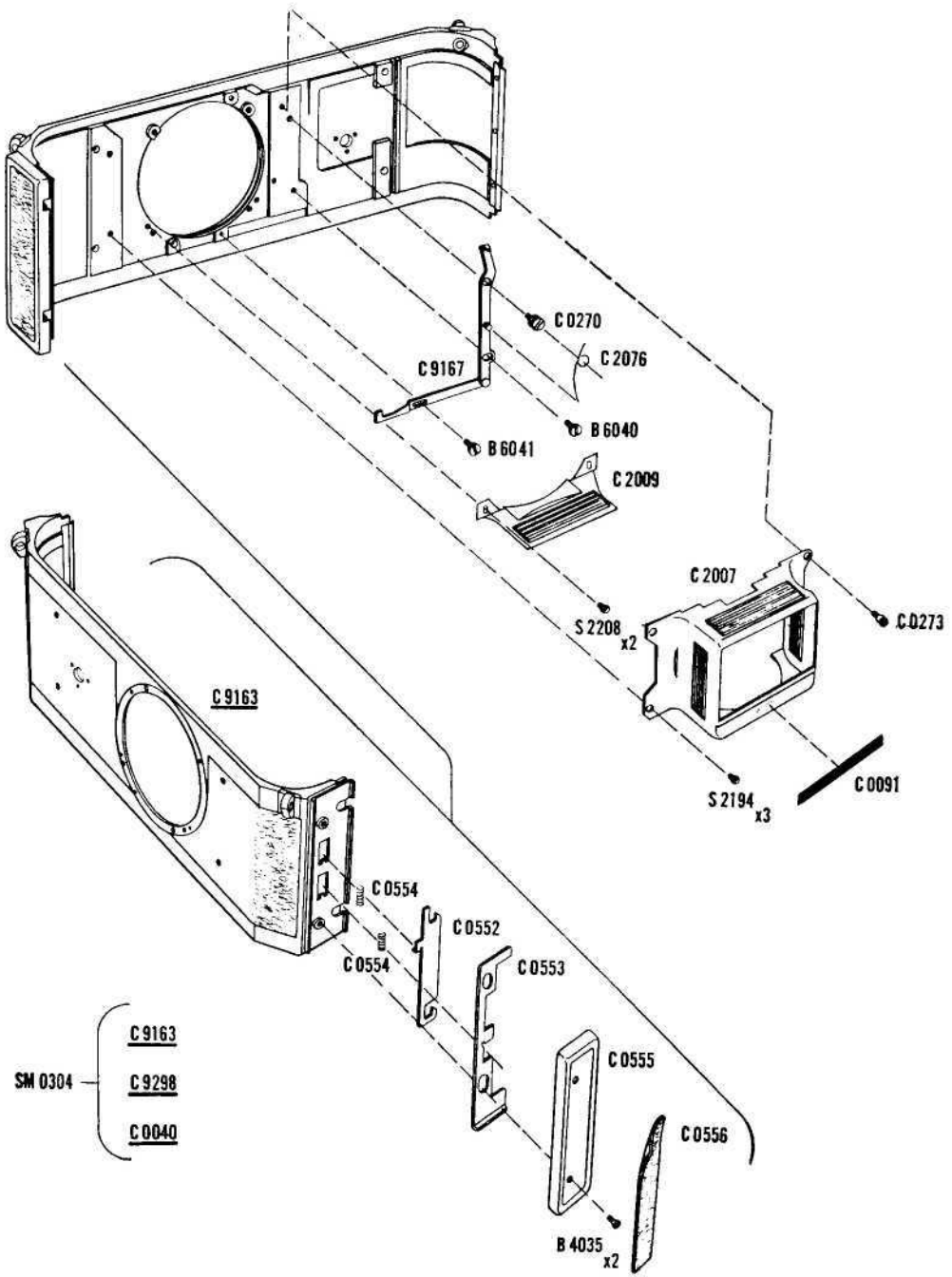
EXPLODED VIEW  
of  
CANON CAMERA MODEL 7



EXPLODED VIEW  
of  
CANON CAMERA MODEL 7

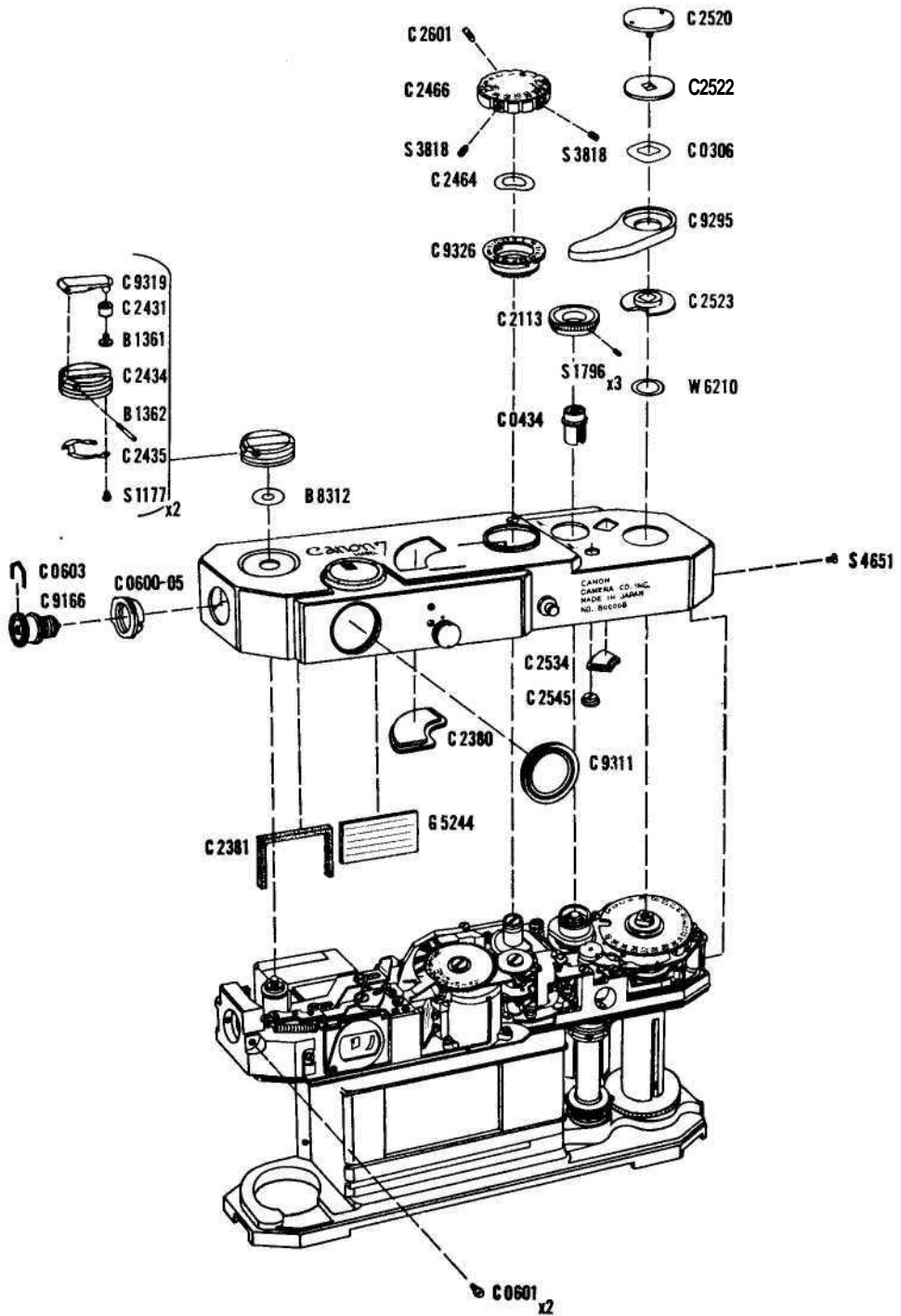


EXPLODED VIEW  
of  
CANON CAMERA MODEL 7

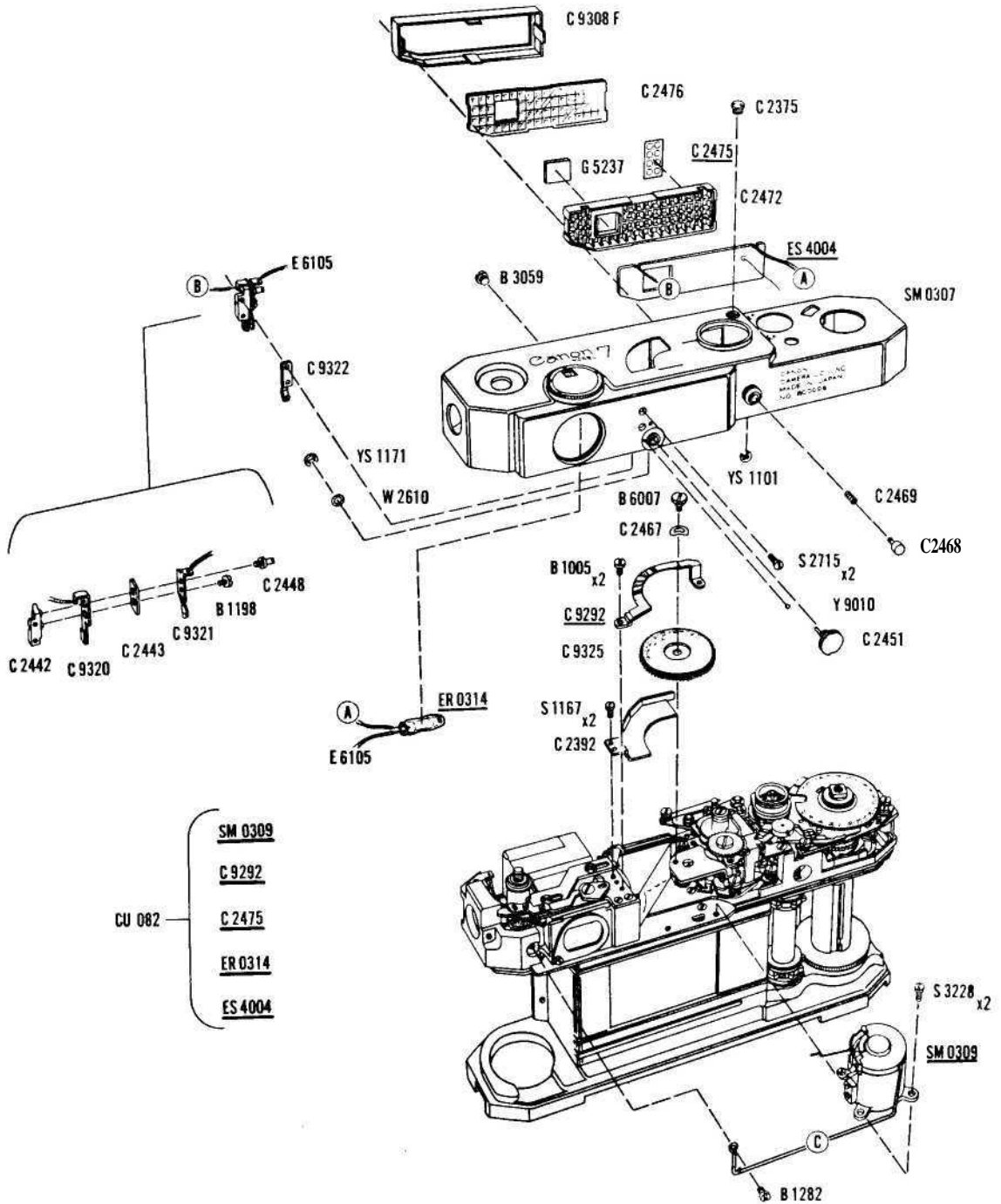


SM 0304 {  
C 9163  
C 9298  
C 0040

EXPLODED VIEW  
of  
CANON CAMERA MODEL 7



**EXPLODED VIEW**  
of  
**CANON CAMERA MODEL 7**



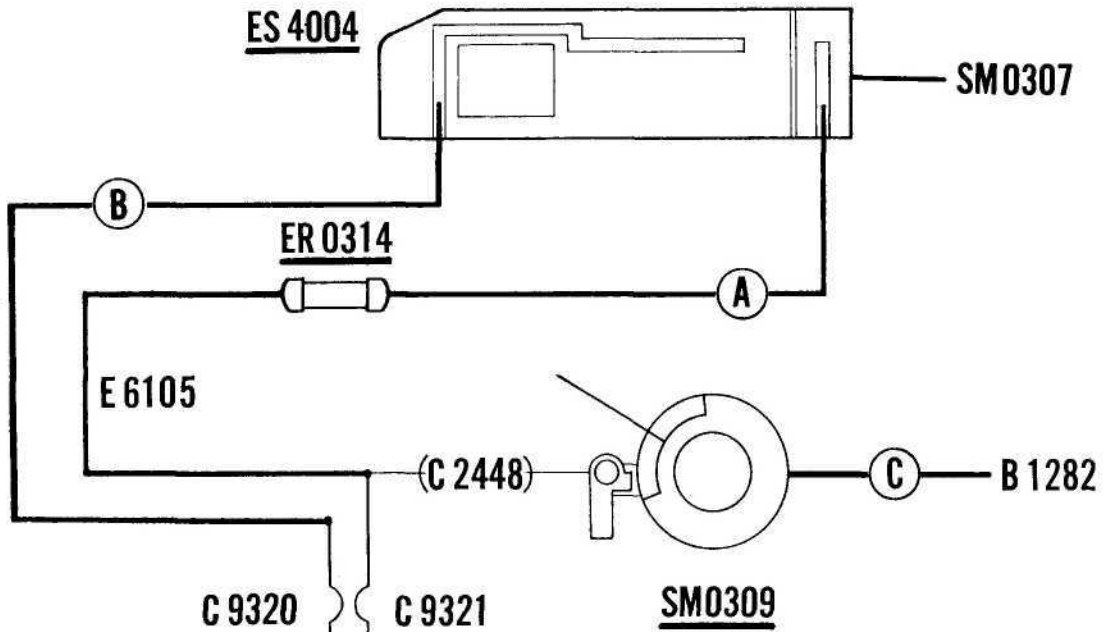
## PARTS LIST

### TOP COVER & EXPOSURE SETTING MECHANISM (cf. p. 5)

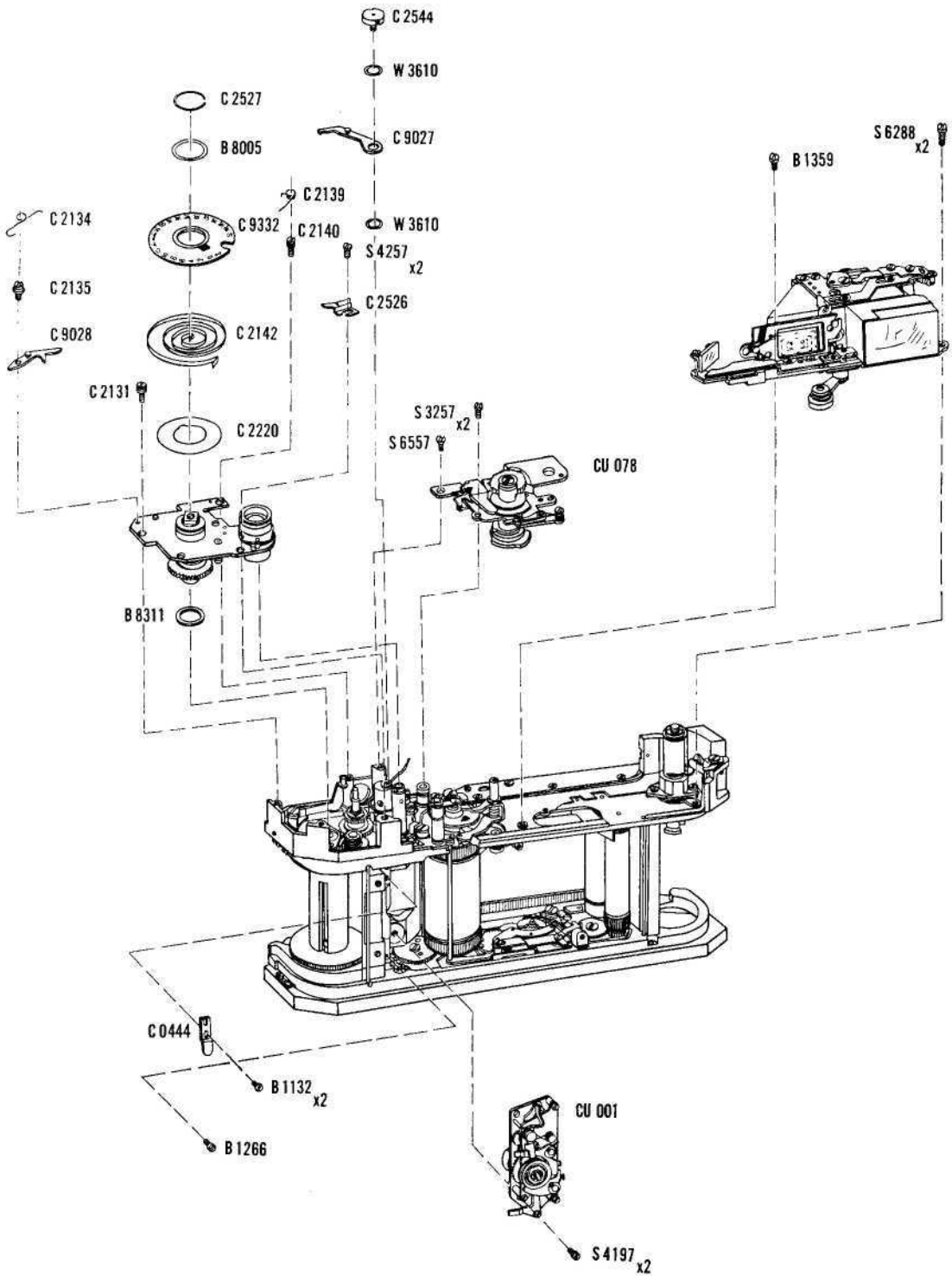
SM 0307	Top Cover (B.P.)
C 9320	Contact (B.P.)
C 9321	Contact (B.P.)
C 9322	Click Spring (B.P.)
C 2375	Pin Face Screw
C 2442	Insulator Base
C 2443	Insulator
C 2448	Screw
C 2451	Light Meter Sensitivity Shifting Knob
C 2468	Film Speed Indicator Button
C 2469	Coil Spring
B 1198	Screw
B 3059	Screw
S 2715	Screwx2
W2610	Washer xN
W 2611	
W2612	
Y 9010	Steel Ball
YS 1101	Retaining Washer
YS 1171	Retaining Washer

### LIGHT METER

CU 082	Light Meter (Unit)
	It is always supplied as the combination of following five underlined parts.
<u>SM 0309</u>	Galvanometer (Unit)
<u>C 9292</u>	Light Meter Indicator (B.P.)
<u>C 2475</u>	Mask
<u>ER 0314</u>	Resistor
<u>ES 4004</u>	Photoelectric Cell
C 9308F	Photoelectric Cell Holder (B.P.)
C 9325	Light Meter Dial (B.P.)
C 2392	Light Shield
C 2467	Spring Washer
C 2472	Lattice Window Frame
C 2476	Light Meter Window
B 1005	Screw x 2
B 1282	Screw
B 6007	Screw
E 6105	Lead Wire (75 mm long)
G 5237	Range-viewfinder Window
S 1167	Screwx2
S 3228	Screw x 2

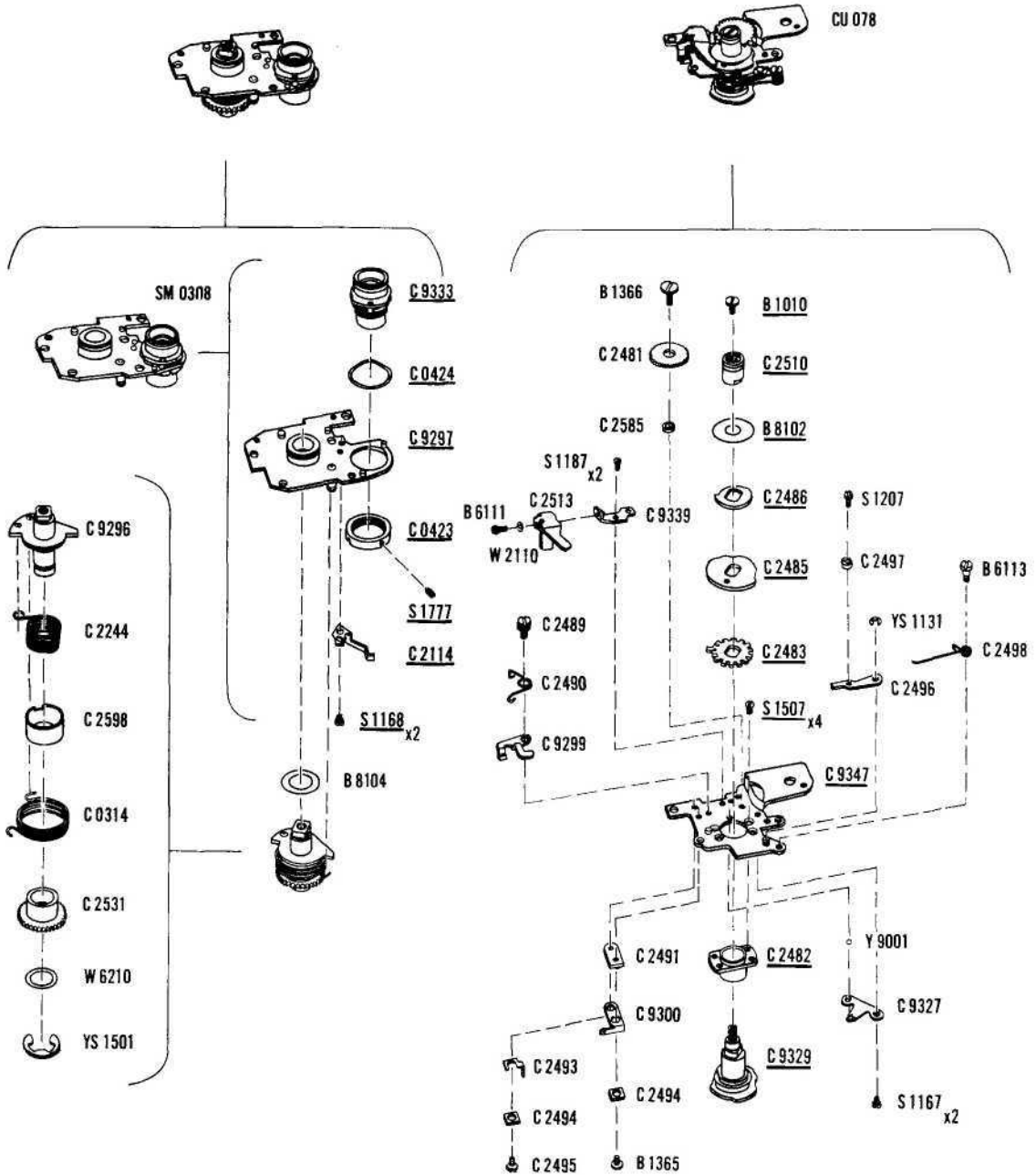


EXPLODED VIEW  
of  
CANON CAMERA MODEL 7





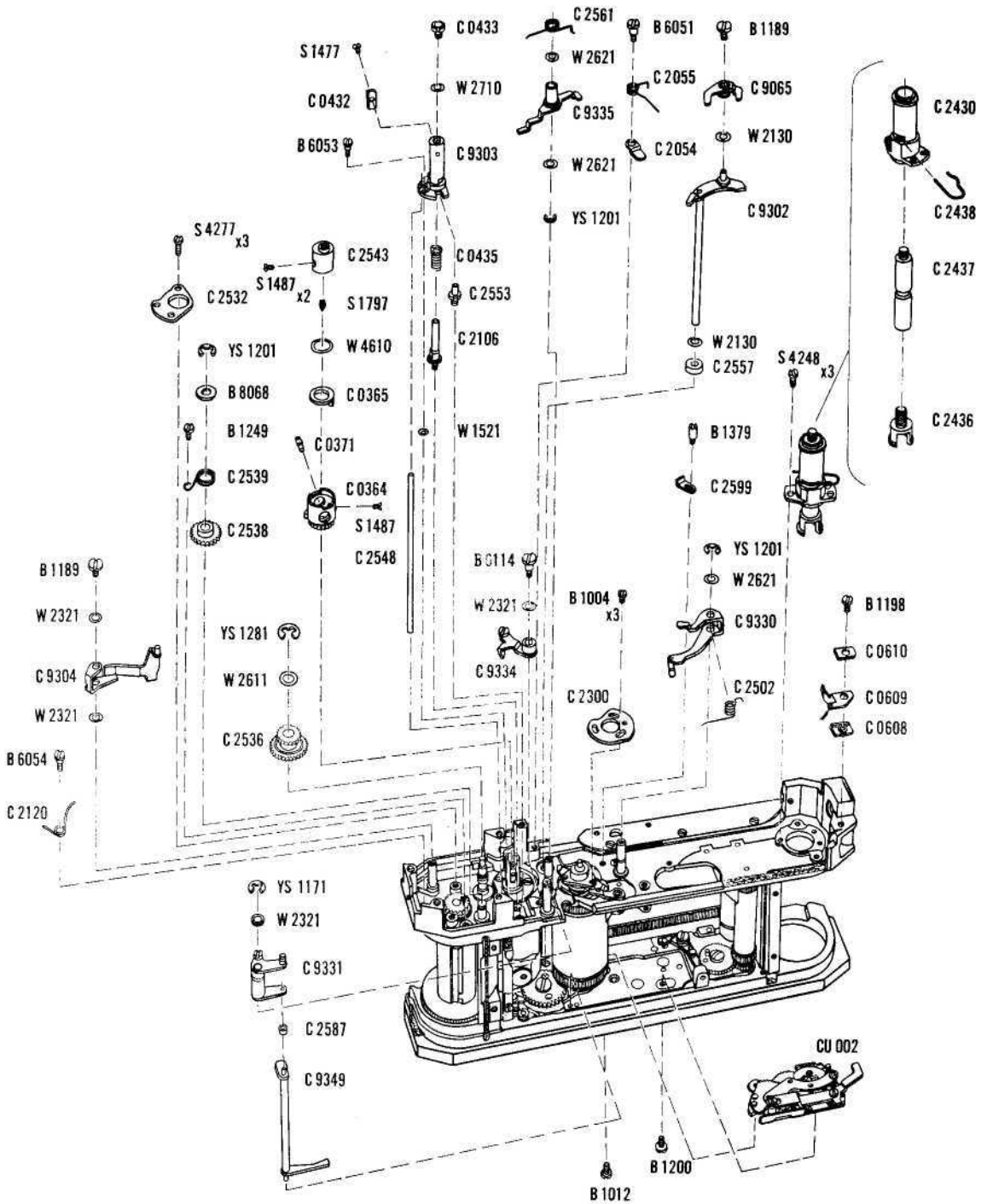
EXPLODED VIEW  
of  
CANON CAMERA MODEL 7



# EXPLODED VIEW

of

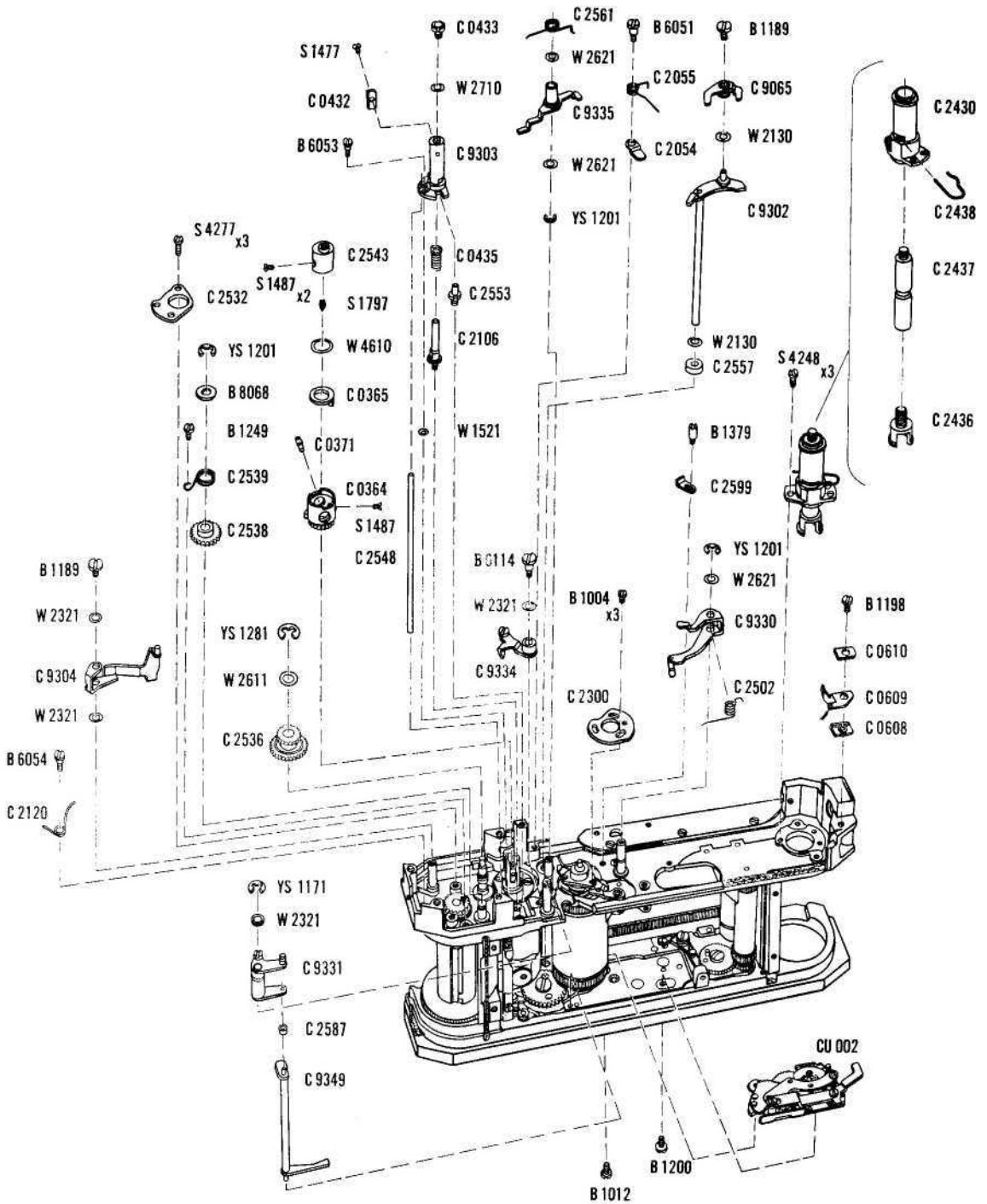
# CANON CAMERA MODEL 7



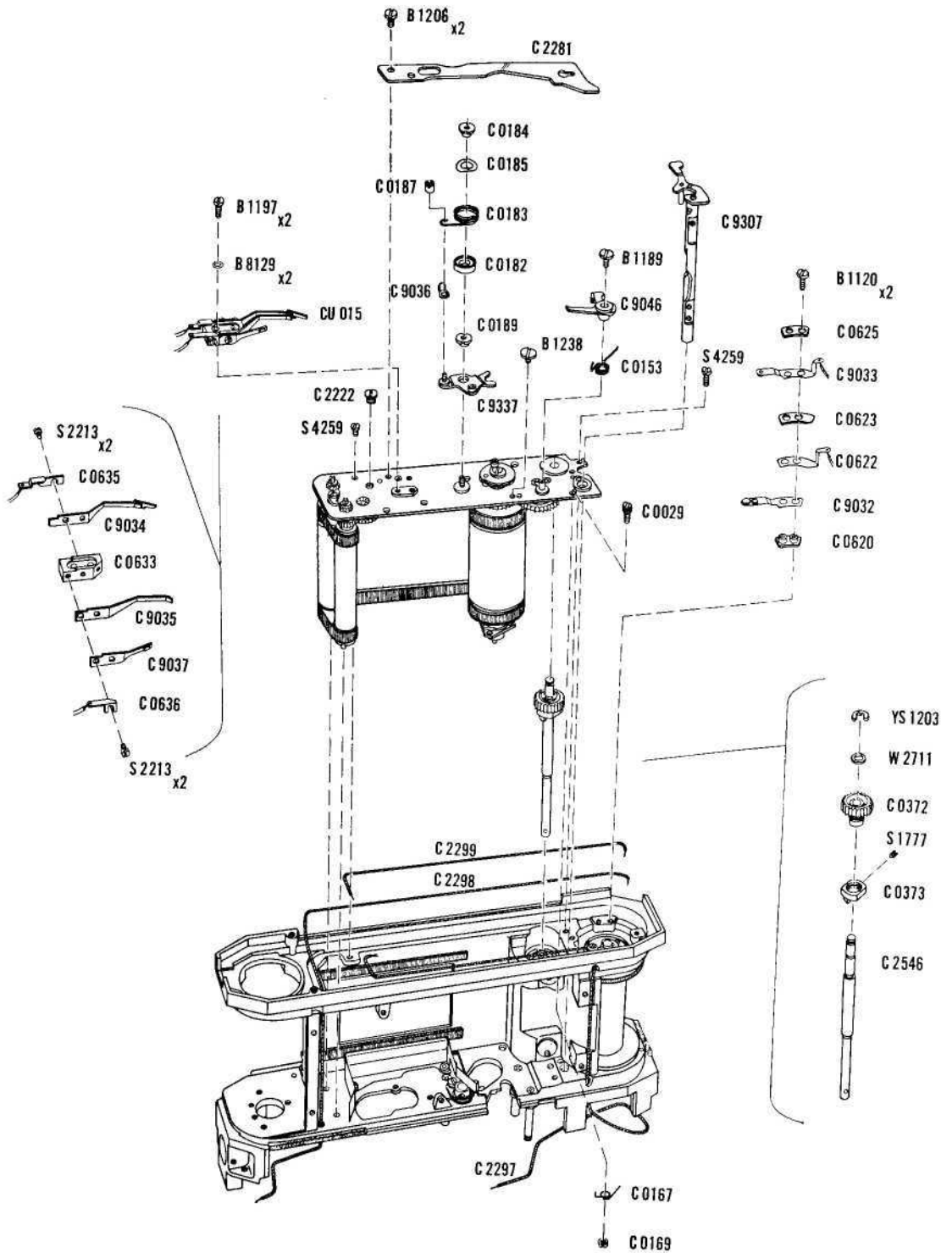
# EXPLODED VIEW

of

# CANON CAMERA MODEL 7



**EXPLODED VIEW**  
of  
**CANON CAMERA MODEL 7**



# PARTS LIST

## SHUTTER MECHANISM (PART 2) (cf. p. 12)

CU 015 Flash Contact (Unit)

C 9034 Flash Contact (B.P.)

C 9035 Flash Contact (B.P.)

C 9037 X Contact (B.P.)

C 0633 Insulator Base

C 0635 Lug

C 0636 Lug

S 2213 Screwx4

C 9032 Flash Contact (B.P.)

C 9033 Flash Contact (B.P.)

C 9036 X Contact (B.P.)

C 9046 Shutter Release Lever (B.P.)

C 9307 Shutter Release Shaft (B.P.)

C 9337 Brake Lever for 1st Curtain (B.P.)

C 0029 Screw

C 0153 Spring

C 0167 Spring

C 0169 Nut

C 0182 Collar

C 0183 Coil Spring

C 0184 Nut

C 0185 Spring Washer

C 0187 Nut

C 0189 Nut

C 0372 Gear

C 0373 Clutch

C 0620 Insulator

C 0622

C 0623

C 0625

C 2222

C 2281

C 2546

B 1120

B 1189

B 1197

B 1206

B 1238

B 8129

S 1777

S 4259

W2711

W 2712

W2715

YS 1203

Flash Contact

Insulator

Insulator

Screw

Shutter Release Plate

Sprocket Shaft

Screwx2

Screw

Screw

Screw x 2

Screw

Washerx2

Screw

Screw x 2

Washer

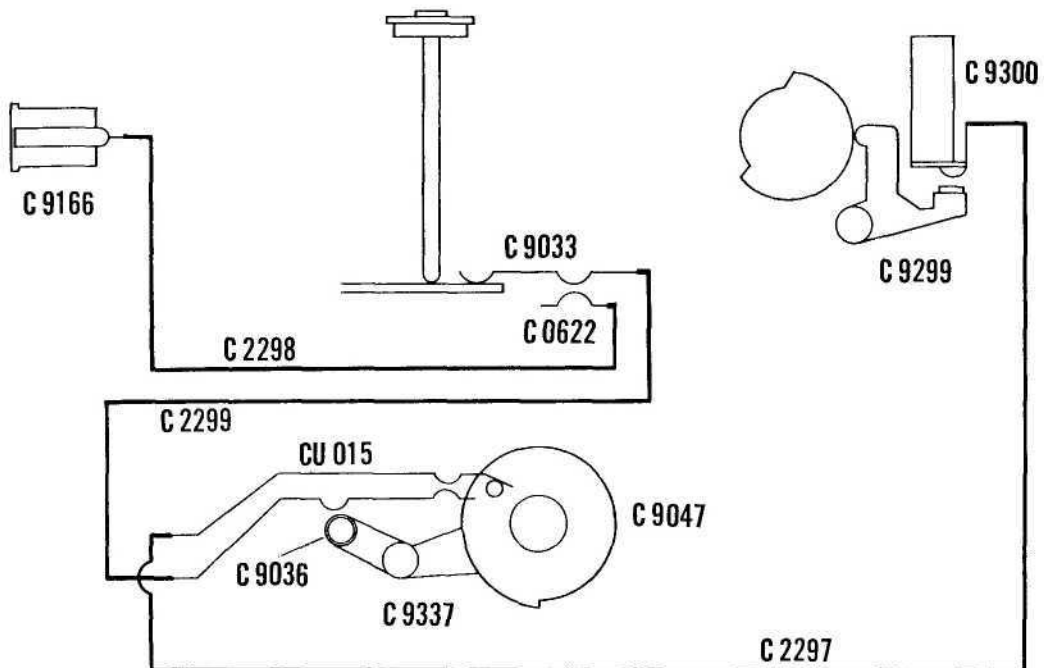
Retaining Washer

### LEAD WIRE

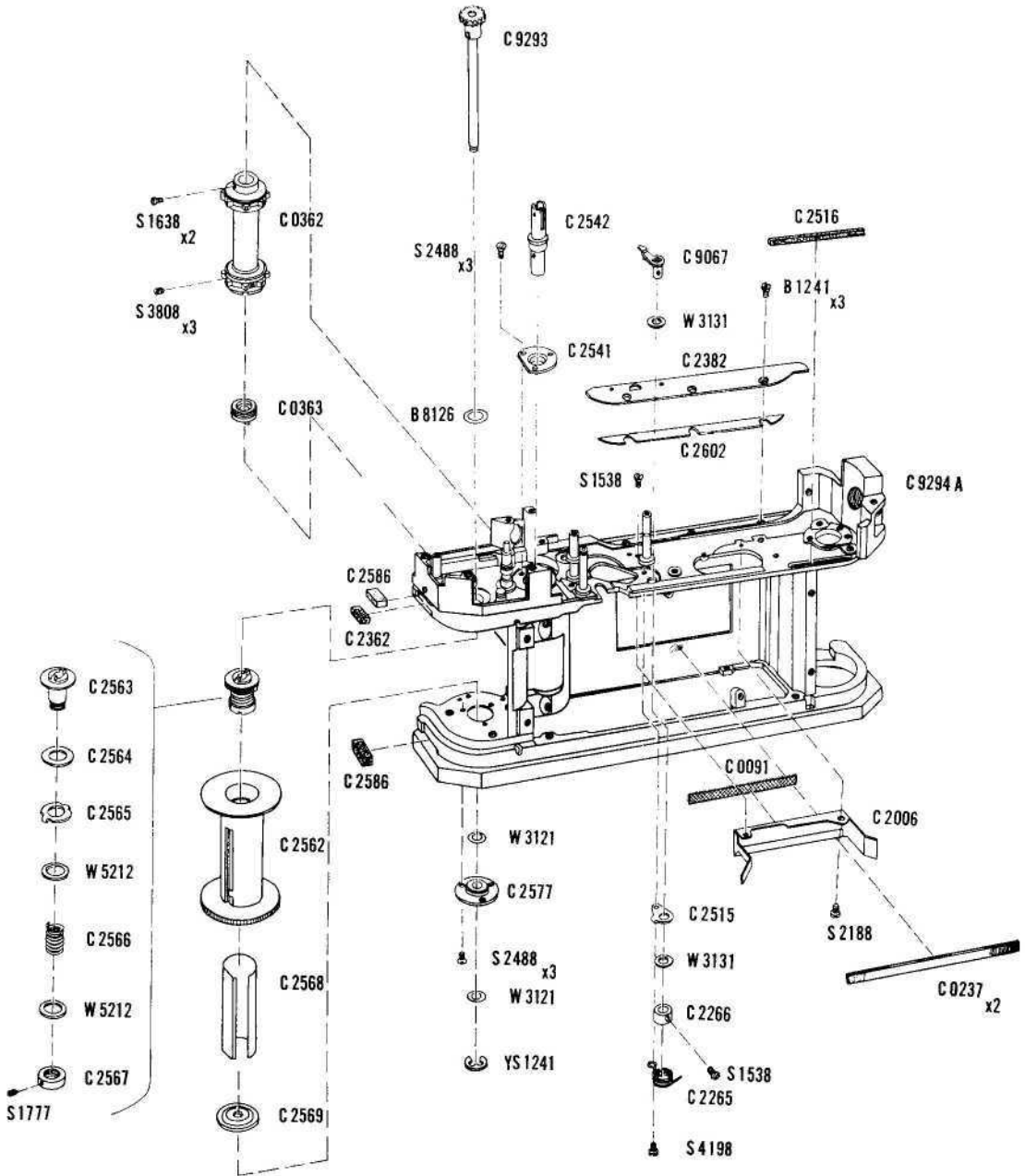
C 2297 Lead Wire (230 mm long)

C 2298 Lead Wire (225 mm long)

C 2299 Lead Wire (112 mm long)



EXPLODED VIEW  
of  
CANON CAMERA MODEL 7



## RANGE-VIEWFINDER

When the double-image of the range-viewfinder does not align, it is adjusted in the following manner:

1. When there is a vertical deviation in the; double-image

Set the Shutter Speed Dial to a figure other than 1-30 graduation and then remove Pin Face Screw C2375 with Tool T06A-C2375-1. Insert a screwdriver (6 pcs set No. 2) into the hole made by removing C2375 and turn Screw C2424. When it is turned in a clockwise direction the image moves downward. Be careful that the screwdriver does not touch Mirror G5228 and that it does not push down too hard on C2424.

See Repair Manual pages 6&9.

2. When there is a horizontal deviation in the double-image

Remove Screw B3059. Insert a screwdriver (6 pcs set No. 2) into the hole made by removing B3057 and turn Screw C2419. When it is turned in a clockwise direction the image moves to the left.

See Repair Manual pages 6 & 9.

3. When the double-image aligns at infinity but has a deviation at short distances

Insert Tool T06A-C151-747A or T06A-C151-747B between Focusing Roller Lever C9301 and Roller C0746 and turn the eccentric ring of C9301. Next, attach the lens and adjust the horizontal image. Repeat this operation until an accurate image is obtained.

See Repair Manual page 9.

When there is a parallax in the range-viewfinder it is adjusted, in the following manner, by attaching the camera to the Inspection Device for Viewfinder Field:

Set the viewfinder for 100mm use and then check whether the viewfinder frame works satisfactorily from infinity to 3.5 feet. Next, make adjustments by turning the eccentric screw of Bright Frame C9316. When complete adjustments cannot be made in this manner, replace Field Compensator CUJ080.

When, after changing the viewfinder frame, a portion of another frame is visible, make adjustments in the following manners

Loosen Screw S1177x2, then insert Tool T06A-C2400-1 into the hole of Arm C2400 and turn it and adjust the positions of C2400 and Arm C9316 while looking into the viewfinder. After the adjustment has been made, tighten S1177x2.

See Repair Manual page 9.

When the Range-viewfinder Selector and viewfinder frame do not couple when shifted, it is adjusted in the following manner

1. When the Range-viewfinder Selector and Viewfinder Selecting Cam C2405 do not couple because the Top Cover is loose, mesh the Viewfinder Selector with C2405 and then, while pushing the Top Cover down, tighten the Flash Terminal.
2. If the Light Meter circuit under the Top Cover is out of position and is touching the viewfinder mechanism, return the circuit to its correct position.

#### SHUTTER SPEED DIAL

When Shutter Speed Dial C2466 and Film Speed Dial C9326 do not couple it is adjusted in the following manner:

Change Spring Washer C2464 which is between C2466 and C9326 for a thicker one. Be careful that C2464 is not too thick, because in such a case C9326 will not hold its position when Film Speed Indicator Button C2468 is pressed.

See Repair Manual pages 5 & 6.

When Film Speed Dial C9326 does not hold its position when the Shutter Speed Dial is turned while pressing down Film Speed Indicator Button C2468, it is adjusted in the following manner:

1. If the rubber on the bottom part of C9326 has come off, glue it back on with Pliobond.

See Repair Manual page 5.

2. If Clutch Lever C2513 slips due to weak friction, replace C2513.

See Repair Manual page 8.



## LIGHT METER

When the Light Meter needle does not move, it is adjusted in the following manner:

1. Check the various connections and adjust the bad connections. Be particularly careful of the Light Meter Sensitivity Shifting Switch part.

See Repair Manual page 6.

2. If the solder has come off, resolder it. Be particularly careful of the part where Photoelectric Cell ES4004 is grounded to Top Cover SM0307.

See Repair Manual page 6.

- 5« If the light meter needle is touching Light Meter Dial C9325. because C9325 is slanting, it is adjusted by bending Base Plate C9347 of the Shutter Speed Selector.

See Repair Manual pages 6 & 8.

4. If a wire inside Galvanometer SM0309 is cut, replace Light Meter CUJ082.

See Repair Manual page 6.

When "0" position of the Light Meter is not correct, it is adjusted in the following manner:

Open the Back Cover, insert a screwdriver into the half-circle hole of Base Plate C2382, which is under Galvanometer SM0309, and make the adjustment by turning the screwdriver to right or left.

See Repair Manual pages 6 & 13.

## EXPOSURE COUNTER

When the Exposure Counter does not return to "S" when the Back Cover is opened, it is adjusted in the following manner:

1. If oil has seeped to the back side of Exposure Counter Dial C9332 and the performance of C9332 has decreased, wipe off the oil.

See Repair Manual page 7.

2. If Washer B8005 is too thick and the performance of C9332 is bad, change B8005 with B8006.

See Repair Manual page 7.

## WINDING LEVER

When the Winding Lever does not move, it is adjusted in the following manner: 1. When Feeding C insert Washers W3610 on the top and bottom of C9027 and Washers W1810 on the top and bottom of C9028 to lessen the play of both claws as much as possible.

See Repair Manual page 7.

2. When the Ease Plate for Winding Mechanism SM0308 is deformed, replace SM0308.

See Repair Manual page 8.

3. Adjust the gap between Bearing for Shutter Button Shaft C9303 and Sprocket Drive Gear C0364 at 0.1 - 1.0mm.

See Repair Manual page 10.

4. When Shutter Release Safety Lever C9044 is deformed, replace C9044.

See Repair Manual page 12.

When an unusual noise is heard when winding the Winding Lever, it is adjusted in the following manner:

1. Refer to the clause "Shutter Is Released But No Exposure", and then oil the Shutter Mechanism.
2. If the finish on Spring C2539 is bad, replace C2539.

See Repair Manual page 10.

When the Winding Lever races or slips, it is adjusted in the following manner:

1. If the teeth of Idle Gear C2536 are broken, replace C2536.

See Repair Manual page 10.

2. If Spring C2244 is weak, replace C2244.

See Repair Manual page 8.

## SHUTTER MECHANISM

When there is no exposure (shutter does not open) even though the shutter is released, it is checked in the following order and the bad parts are adjusted.

1. Remove the Front and Back Cover, release the shutter, and then oil, with an injector, all the revolving bearings with one or two drops of specified oil. Be careful not to oil too much as the oil will ooze out onto the shutter curtain.

See Repair Manual page 2.

2. When Shutter Speed Selector CU078 is deformed, replace CU078.

See Repair Manual page 7.

3. When the working of 2nd Curtain Clamp Lever C9302 is bad, check Spring C2055. If C2055 has become dislocated or weak, return C2055 to its correct position or replace it.

If the pressure of Cap C2054 is too strong, bend C2054 and weaken the pressure. Be careful, at this time, not to make the play too big at the top and bottom of C9302.

See Repair Manual page 10.

4. When the mesh between 2nd Curtain Clamp Lever C9302 and 2nd Curtain Release Lever C9158 is shallow, set the shutter at B, and while pressing down the shutter adjust the position of the eccentric screw of Adjusting Lever for 2nd Curtain Clamp Lever C9334 and the position of Stopper C2599 so that the mesh of C9302 and C9158 is 0.3mm by eye-measurement.

See Repair Manual pages 10 & 12.

5. When the caulking of 2nd Curtain Release Lever C9158 has become dislocated, replace Shutter Drum CUJ092.

See Repair Manual page 12.

When the exposure is different on the right and left sides of the picture, it is adjusted in the following manner:

1. After referring to the clause "Shutter Is Released But No Exposure", oil the various bearings of the Shutter Mechanism.
2. When the speeds of the first curtain and the second curtain are different, loosen Screw B6039, remove the mesh of Claw C3301, and make the adjustment by turning Spring Tension Adjusting Ratchet Nut C0211 to the right or left. This adjustment is performed while testing with the Shutter Tester.

When the Shutter Speed is inaccurate, it is adjusted in the following manner by using the Shutter Tester:

1. Adjustment of high-speed shutter (1/60 - 1/1000)

Make sure that Spring C2055 is in the groove of 2nd Curtain Clamp Lever C9065.

Adjust the speed of 1/250 by turning the eccentric nut of 2nd Curtain Clamp Lever C9302 to the right or left with Tool T06A-C2051-1.

Next, test the speed for 1/1000, and if it is not up to specifications, remove screws S6567 and S3237x2, remove Shutter Speed Selector CU078, loosen Screw B1004x3 and adjust by moving Cam for High Speed C2300 to the right or left.

See Repair Manual pages 7 & 10.

2. Adjustment of slow shutter (1 - 1/30)

Loosen Screw S1207 and make the adjustment by turning Eccentric Collar C2497 to right or left.

By removing the Shutter Speed Dial this adjustment can be performed with two small screwdrivers without taking off the Top Cover.

See Repair Manual page 8.

When, due to deformation of Slow Speed Selecting Lever C9330, the Anchor of Slow Shutter Governor CU002 does not become detached at 1/15 and the exposure time is extended to approximately 1 second, it is adjusted in the following manner:

Bend C9330 so that it touches the cam of Shutter Speed Selecting Disc C9329.

When Slow Shutter Governor CU002 does not operate at 1/15, because the mesh between Slow Speed Setting Lever C9349 and 2nd Curtain Release Lever C9158 is shallow, and the exposure time is short, it is adjusted in the following manner:

1. If there is an allowance in the mesh between Shutter Release Lever C9046 and Shutter Release Disc C9047 when the Winding Lever is fully wound, replace C9047 and adjust.

See Repair Manual pages 11 & 12.

2. Set CU002 deep in the Body. However, be careful of the fact that if it is set too deep it will sometimes stop and the shutter will remain open.

See Repair Manual page 10.

3. Abrade with oilstone the part of C9349 that touches C9158.

See Repair Manual page 10.

When set at B, if the shutter closes, or the shutter remains open even after the finger has been removed from the shutter button, it is adjusted in the following manner:

By turning the eccentric screw of Adjusting Lever for 2nd Curtain Clamp Lever C9334, adjust the mesh between 2nd Curtain Clamp Lever C9158 and 2nd Curtain Clamp Lever C9302 at 0.3mm by eye-measurement after pressing the shutter button. After this adjustment has been completed, check the other shutter speeds.

See Repair Manual page 10.

When set at T, if the shutter closes when the finger has been removed from the shutter button, it is adjusted in the following manner:

Bend upwards the end of T-Lever C9335 which touches Bearing for Shutter Button Shaft C9303 so that it can drop easily into the hole of C9303.

See Repair Manual page 10.

When the shutter button does not come up or does not return smoothly to normal when the finger has been removed after pressing the shutter button, it is checked and adjusted in the following manner:

1. If the sliding of Bearing for Shutter Button Shaft C9303 is bad, grease Guide C2106.

See Repair Manual page 10.

2. If C2106 is bent, replace C2106.

See Repair Manual page 10.

3. If the spring of Shutter Release Plate C2281 is weak, bend C2281 to increase the effect of the spring.

## SELF-TIMER

When the shutter is released simultaneously with the start of the Self-Timer after the Self-Timer has been set and the shutter button has been pressed, it is adjusted in the following manner:

Loosen Screw B1132x2 and adjust by sliding Self-Timer Starting Knock C0444 in a downward direction.

See Repair Manual page 7.

When the Self-Timer stops in mid-operation, it is adjusted in the following manner:

If the Spring used in Self-Timer CU002 is dislocated, return the Spring to its correct position. If the Spring is broken, replace CUJ002.

See Repair Manual page 7.

When the shutter is released at an unusual point after the Self-Timer has **been** set in motion, it is adjusted in the following manners

Replace Screw B1266 with Screws B1267 and B1268 of different diameters. When replaced with the small-diameter B1267 the shutter release **will be** delayed, and when replaced with the large-diameter B1268 the shutter release will be hastened.

## INCORRECT FOOTS

When the flange focal distance is incorrect, it is adjusted in the following manner:

Measure the distance between the lens mount and the pressure plate with the 28.8mm Gauge and adjust it with Adjusting Washers C0034 so that it is within +3 of standard graduation.

If Front Cover C9163 should become indented by some kind of percussion for over +10 graduations, replace Front & Back Cover SM0304.

See Repair Manual pages 2 & 4.

When the range-viewfinder is out of order, refer to the clause "Range-viewfinder Double-Image Does Not Align" and adjust.

When the lens is bad, as a result of tests with the L-Type Collimator and Lens Projection Tester, repair the lens.